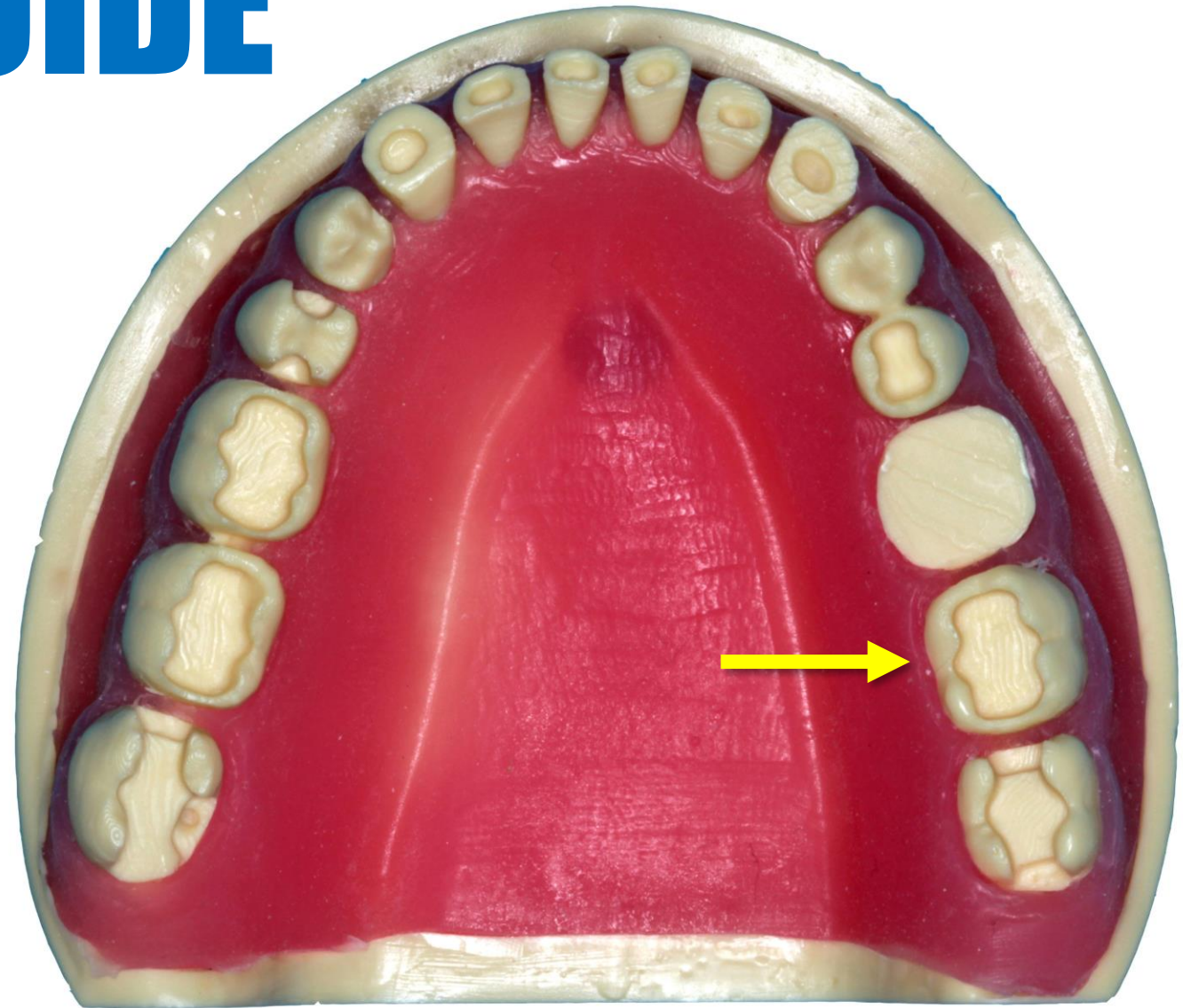


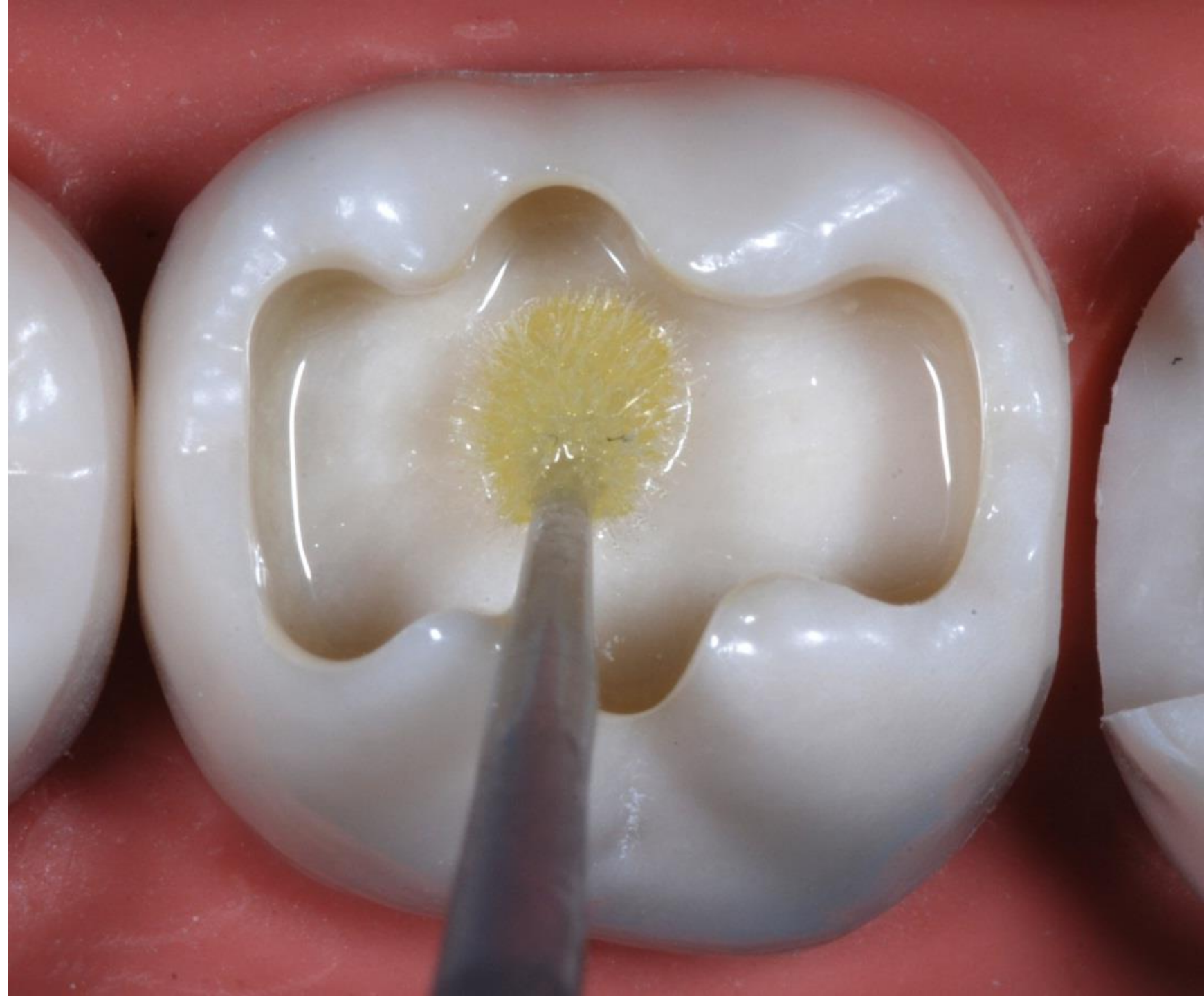
PRACTICAL GUIDE

CLASS I
COMPOSITE
LR7



**APPLY
BONDING
RESIN**

LIGHT CURE



APPLY COMPOSITE

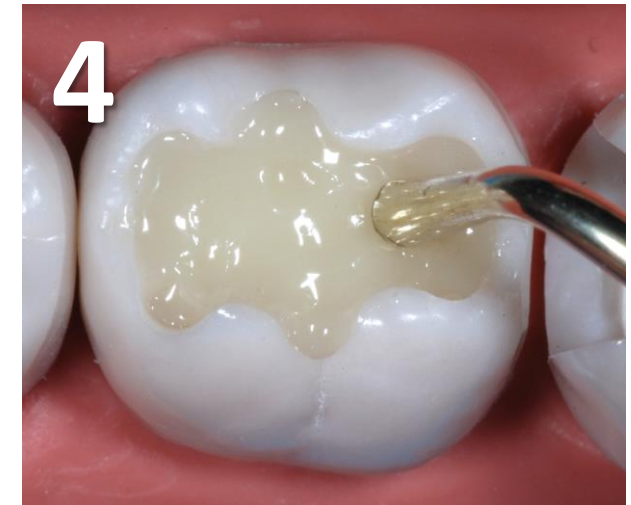
BULK FILL BASE (1-4)

- Apply bulk fill base material
- Leave 1-2mm space occlusally
- Allow to self-level (10 seconds)
- Light cure
- Place capping composite (as below)

OR

RESTORATIVE BULK FILL (3-4)

- Restore to occlusal surface
- One increment



**CAVITY SHOULD
APPEAR
SLIGHTLY
UNDERFILLED**

**REMOVE EXCESS
IF NECESSARY**



PLACE 3 OCCLUSAL FOSSAE



TECHNIQUE TIP

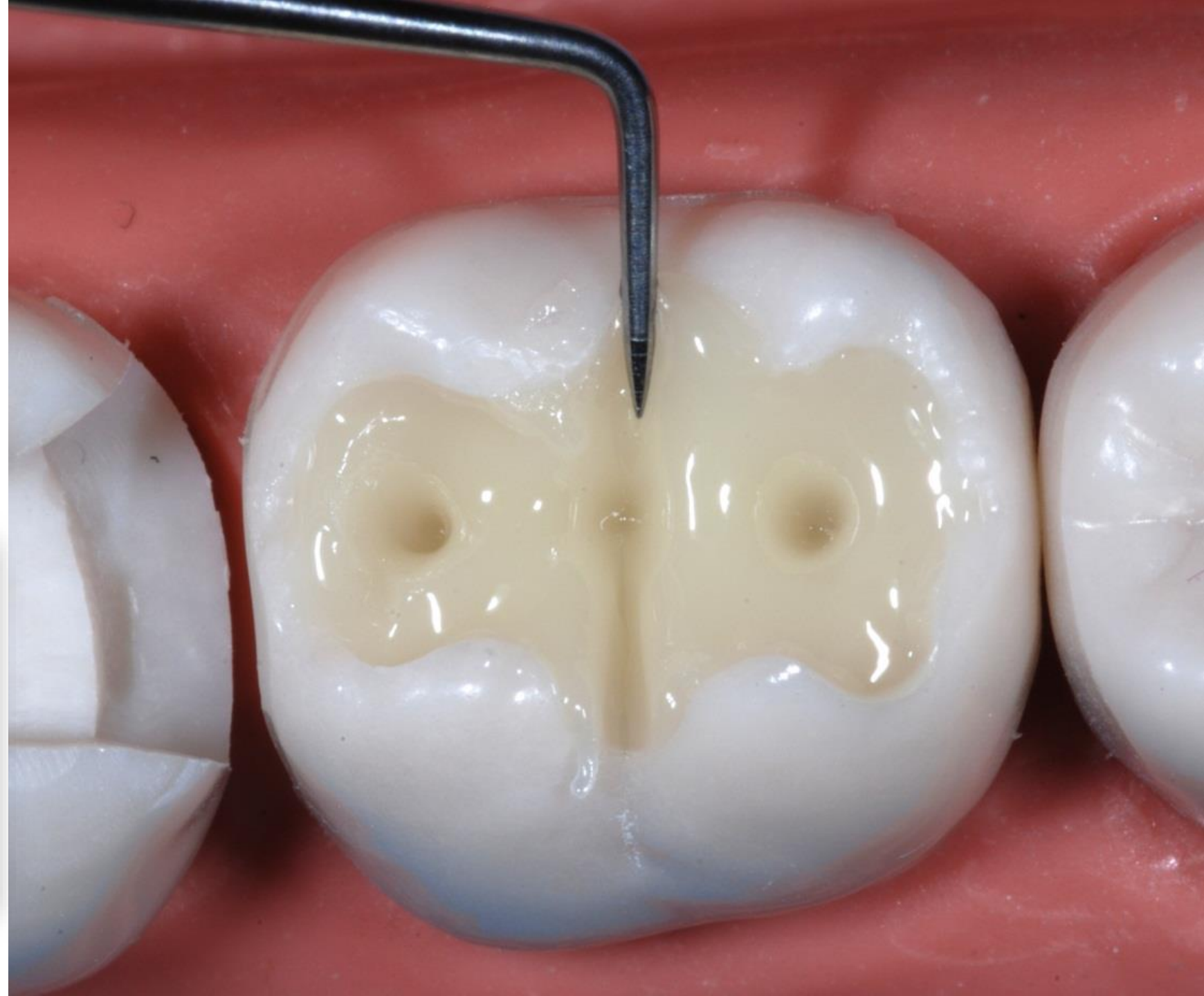
- **PLACE CENTRAL FOSSA FIRST TO ORIENTATE**
- **THEN MESIAL/DISTAL**



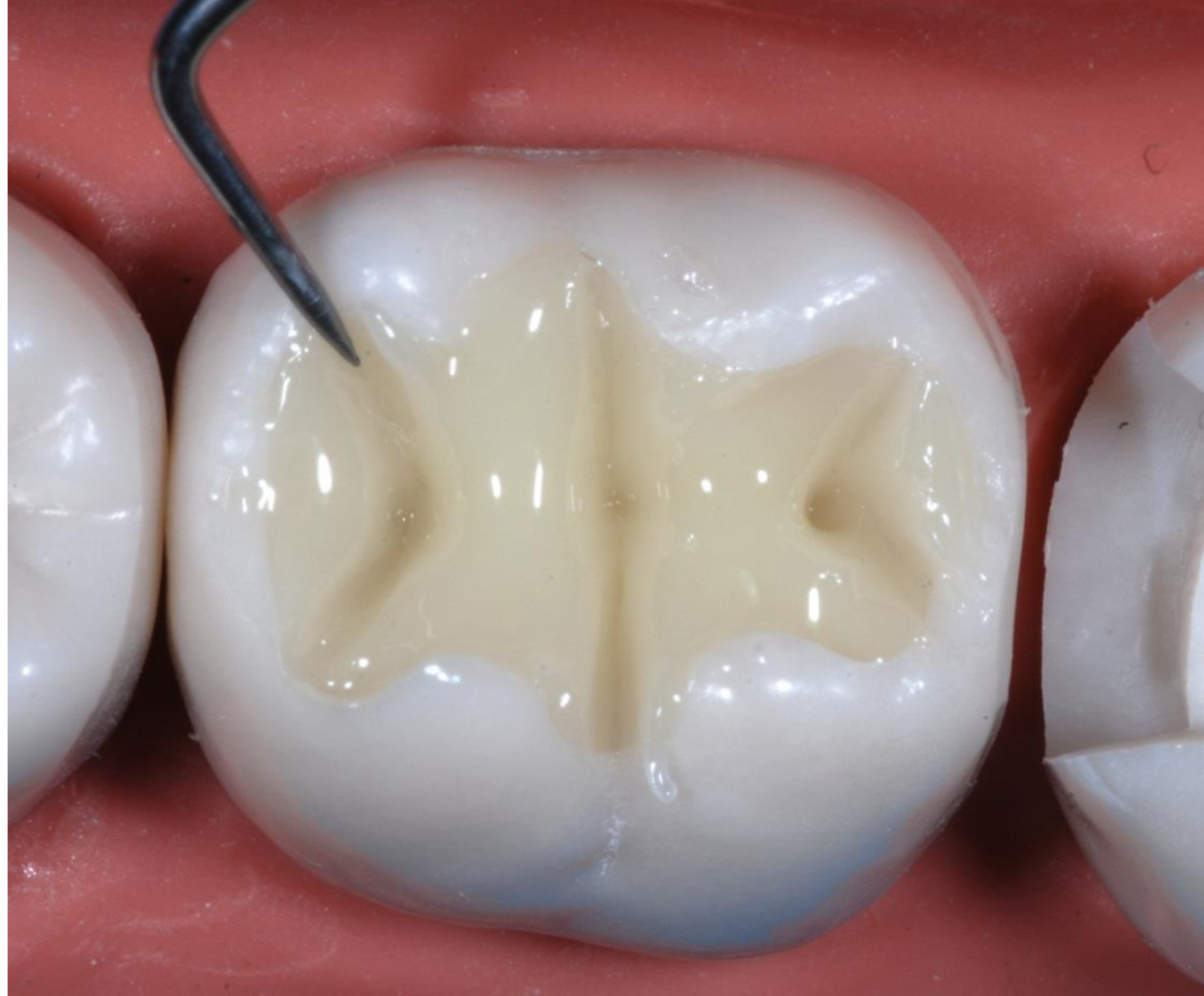
PLACE CENTRAL LATERAL FISSURES



CW102 (COLTÉNE)



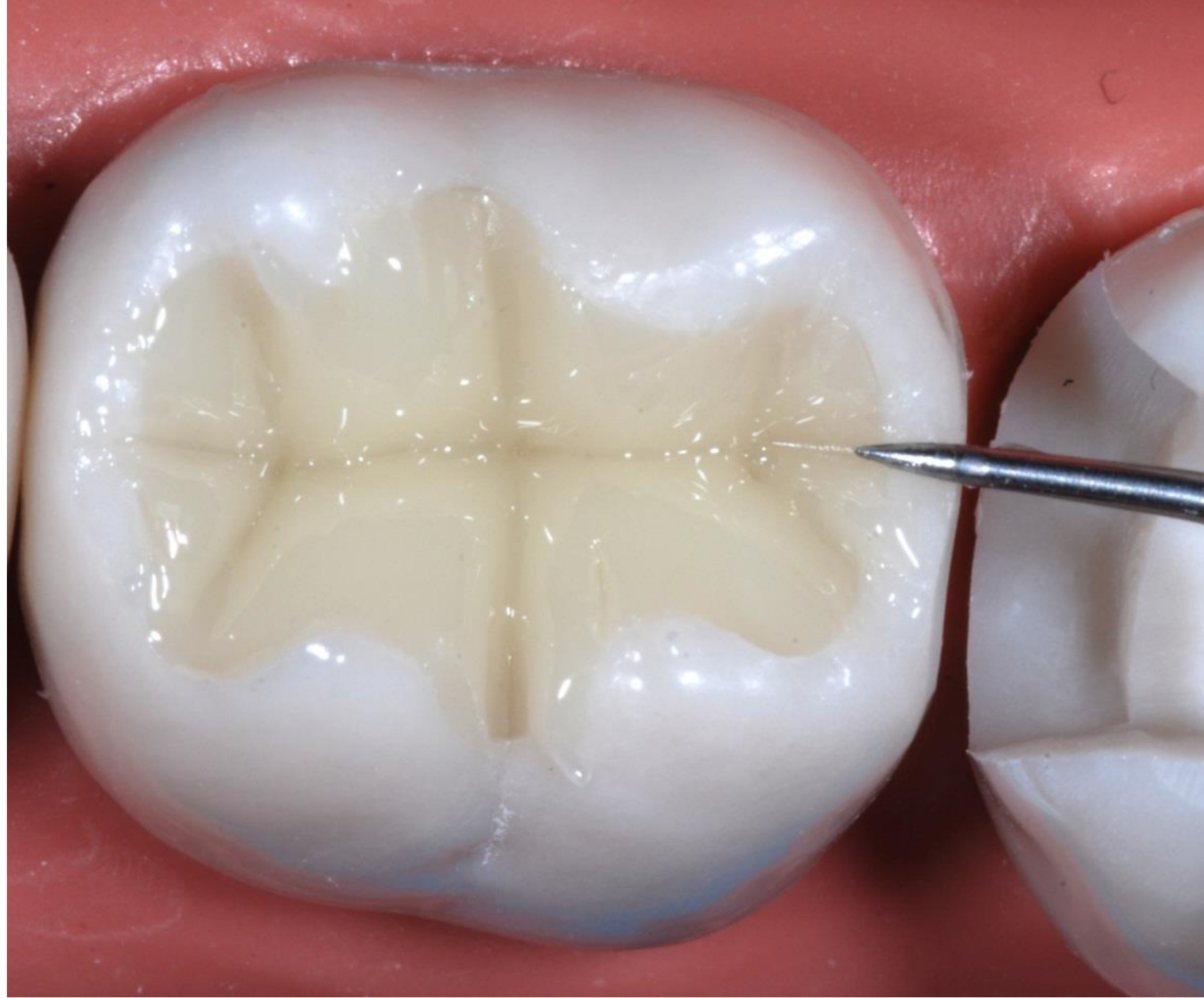
**PLACE
MARGINAL
FISSURES**



**PLACE
MIDLINE
FISSURE**



**PLACE
MARGINAL
GROOVES**



RESTORATION COMPLETE

- **REFINE SHAPE**
- **REMOVE
MARGINAL EXCESS**
- **LIGHT CURE**

